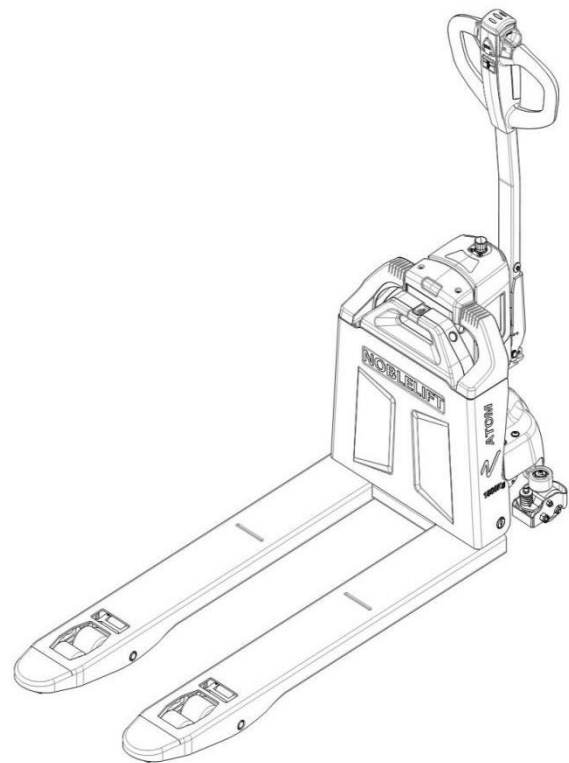


Electric Pallet Truck PTE15Q2

PARTS MANUAL

510846020102



Version: V03

Truck Identification Number From:

Parts Manual

PTE15Q2-B-PM03EN

Please order spare parts from authorized dealers of our company.

In order to avoid wrong delivery, all the orders for spare parts should specify the following items:

- Truck model, identification number and manufacture year.
- Orders for spare parts of mast, hydraulic transmission unit, steering axle, motor, etc. shall indicate the manufacture number of these parts.
- Codes for our company spare parts are shown in the table of parts manual. Please also pay attention to the description of supply status, order quantity, etc. (check the number listed in "Mark" column of the parts manual).

"Mark" Column:

The unmarked indicates the parts are in short supply cycle.

Number 1: supply as package. Indicating these that parts are small parts and seal parts, which are supplied in package unit and in short supply cycle.

Number 2: supply with constraints. Indicating that these spare parts are not in stock and will be prepared for production after receiving the order from customers, which are in long supply cycle.

Number 3: phasing-out supply. Indicating that these parts will be replaced by new parts due to technical improvements and the current stock will not be available when these parts run out. Please check the description of technical improvements notice.

Number 4: supply as assembly. Indicating that these parts are assembly parts defined by manufacture process, which cannot be supplied as a single part.

Number 5: check other tables.

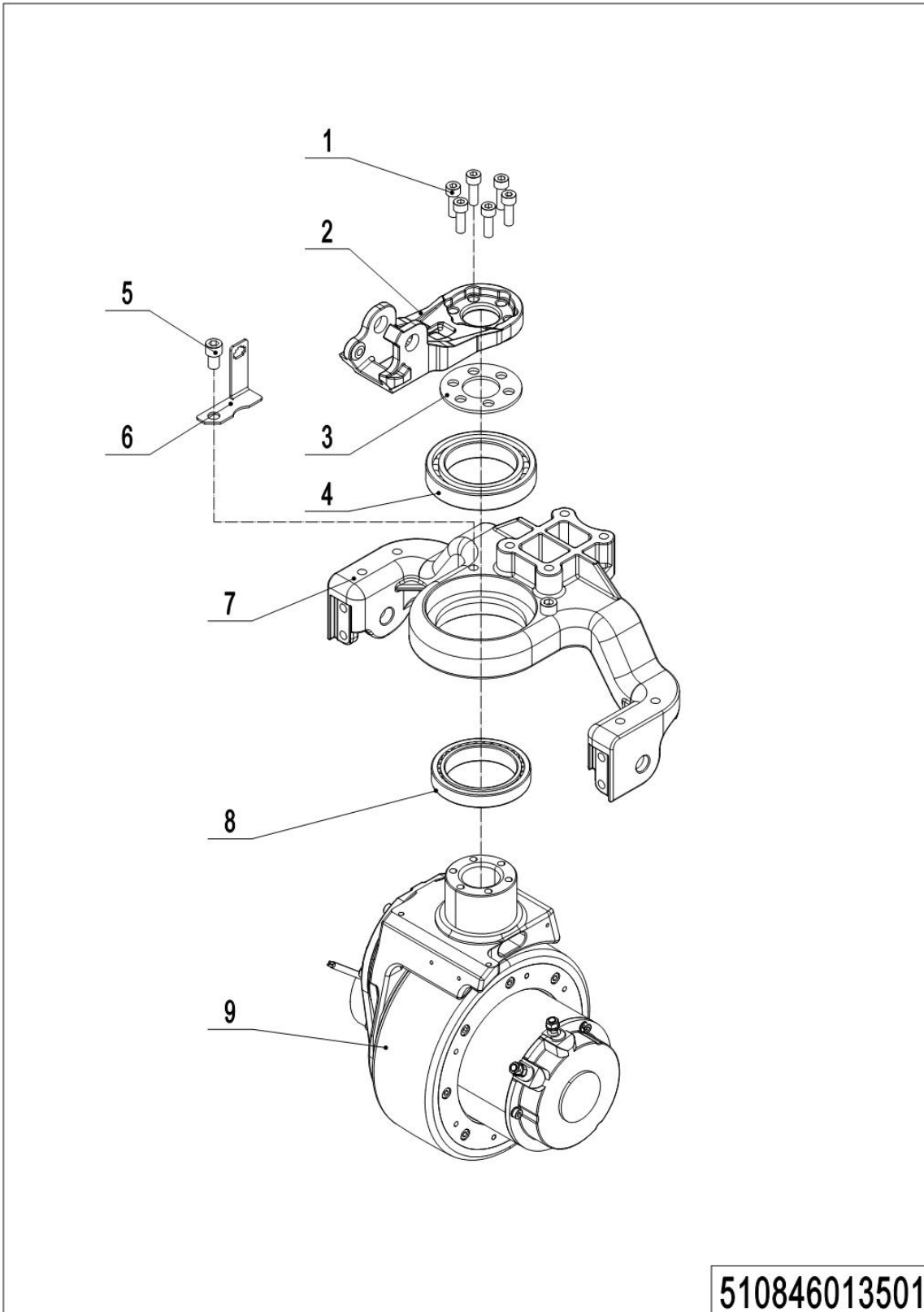
This parts manual is the property of our company and can be shared under the confidential agreement only, our company has the right to claim for compensation of any unauthorized use. Copy without permission is not allowed. Figures in the manual are not limited by the original design.our company Intelligent Equipment Co., LTD reserves the right to improve the products for continuous technology progress.

Table of Contents

Chapter 1: Drive System.....	1
01 Drive Unit Steering(15Q2)(510846013501).....	1
02 Drive Assembly(15Q2)(510846013002)	3
Chapter 2: Hydraulic System.....	5
01 Hydraulic Components (15Q2) (510846023501)	5
Chapter 3: Truck Frame	7
01 Truck Frame (510846038501)	7
02 Truck Frame (510846038502)	9
Chapter 4: Steering System, Braking System, Wheels	11
01 Tiller Unit (510846011003)	11
02 Tiller (510846011004)	13
03 Load Wheel (Tandem) (510846017001)	15
04 Caster (510846016501).....	17
05 Caster (510846016502).....	19
Chapter 5: Electrical Parts	21
01 Wire Harness (510846033002)	21
02 Electronic components (509946033012)	23
03 Charger (510846036501)	25
03 Charger (508046036501)	27
04 Traction Battery (510846038002).....	29
Chapter 6: Others	31
01 Labels and Decals-EU (510846047008)	31
02 Labels and Decals-US (510846047010)	33
Appendix.....	35
01 Electrical Circuit Diagram (509946045504).....	35
02 Hydraulic Circuit Diagram (508046045502).....	36
03 Consumable Parts List	37

Chapter 1: Drive System

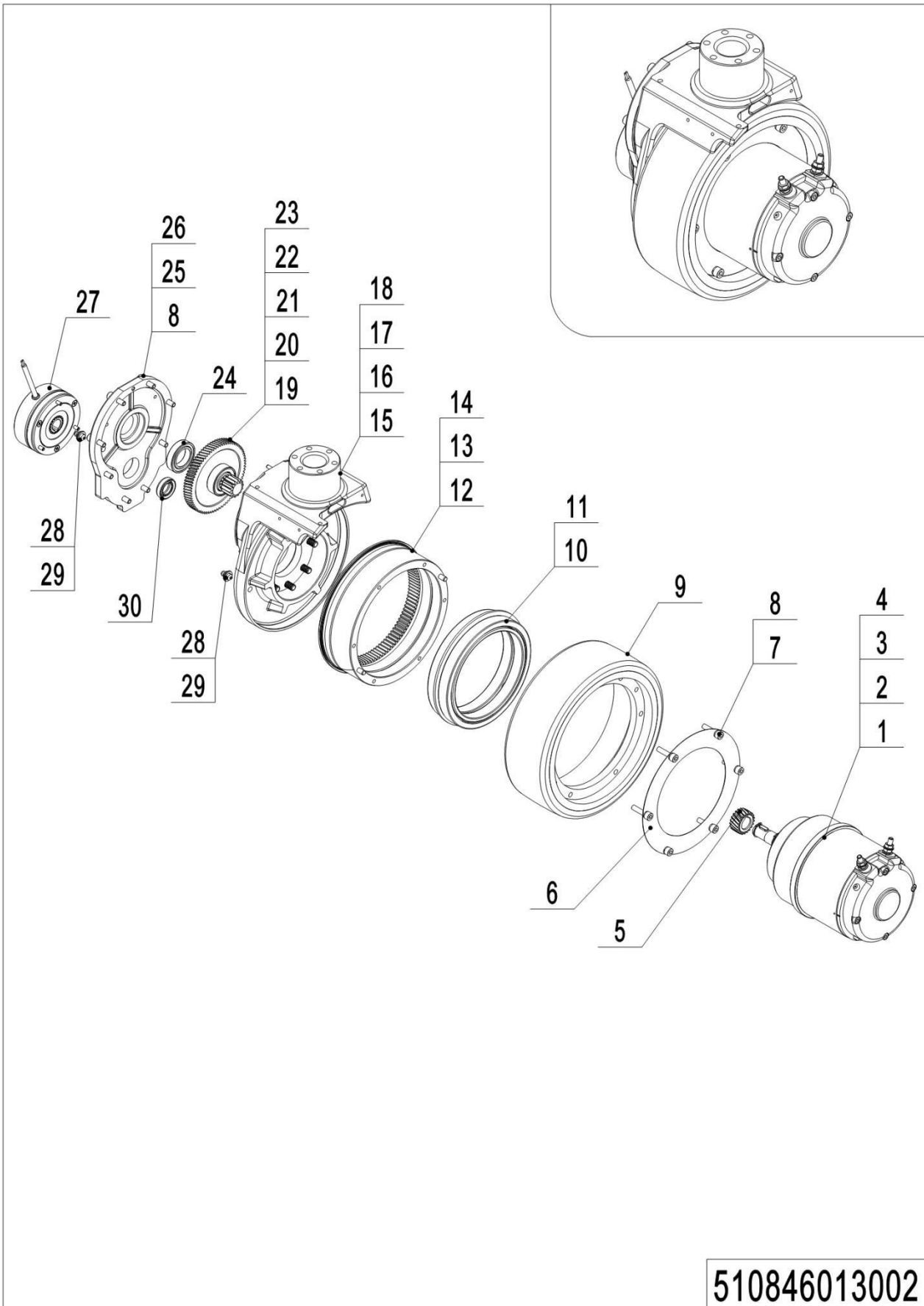
01 Drive Unit Steering(15Q2)(510846013501)



01 Drive Unit Steering (15Q2) (510846013501)

No.	Item Code	Mark	Item Description	Qty.	Substitute	Note
1	910200200058	1	Screw	6		
2	509913520004		Flange	1		
3	509913520002		Subplate	1		
4	910700200058		Bearing	1		
5	910200200074	1	Screw	2		
6	510813520001		Bracket	1		
7	509913520006		Wheel Mount	1		
8	910700600044		Bearing	1		
9	940900100029	2	Drive Unit	1		YX

02 Drive Assembly(15Q2)(510846013002)



510846013002

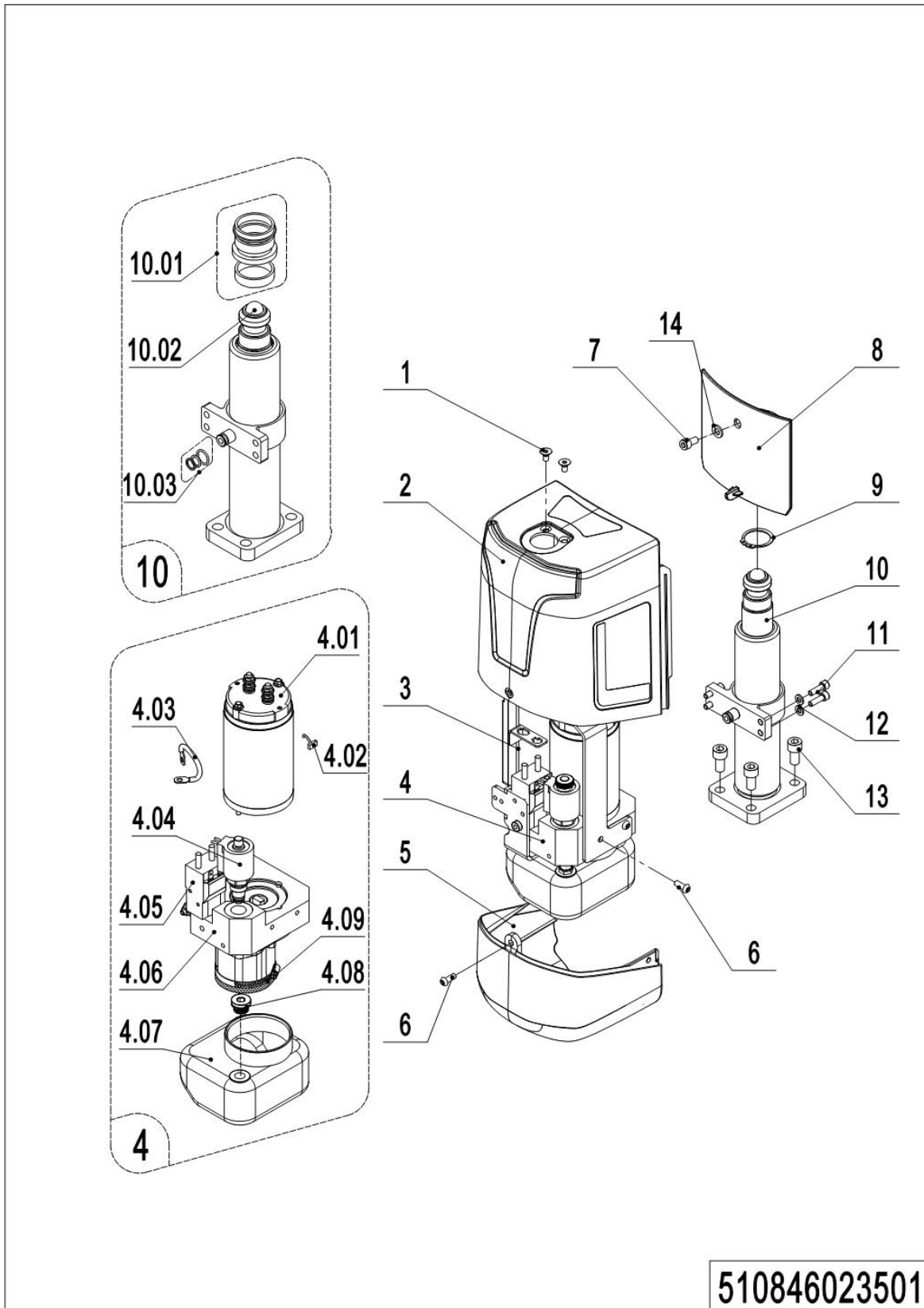
02 Drive Assembly (15Q2) (510846013002)

No.	Item Code	Mark	Item Description	Qty.	Substitute	Note
1	961002200003		Motor	1		
2	910600800005		Flat Key	2		
3	910401300006		Circlip	1		
4	910401300007		Circlip	1		
5	961000700006		Gear	1		
6	961001300009		Scraper Seal	1		
7	910200200140		Screw	6		
8	910400500018		Spring Washer	14		
9	961001300010		Wheel	1		
10	910700200044		Bearing	2		
11	910401400023		Circlip	1		
12	961001300008		Gear	1		
13	910600100013		Cylindrical Pin	2		
14	961001300007		Oil Seal	1		
15	961002200001		Gearbox	1		
16	910200200147		Screw	5		
17	910400500019		Spring Washer	5		
18	910600100003		Cylindrical Pin	1		
19	961001300002		Gear	1		
20	961001300005		Gear Shaft	1		
21	910600800006		Flat Key	1		
22	910700200057		Bearing	1		
23	910401300008		Circlip	1		
24	910700200046		Bearing	1		
25	961002200002		Cover	1		
26	910200200139		Screw	8		
27	961002200004		Brake	1		
28	911200100003		Oil Cup	2		
29	910800900010		Bonded Washer	2		
30	961000700012		Oil Seal	1		

1= Supply as package. 2= Supply with constraints. 3= Phasing-out supply. 4= Supply as assembly. 5= Check other tables.

Chapter 2: Hydraulic System

01 Hydraulic Components (15Q2) (510846023501)



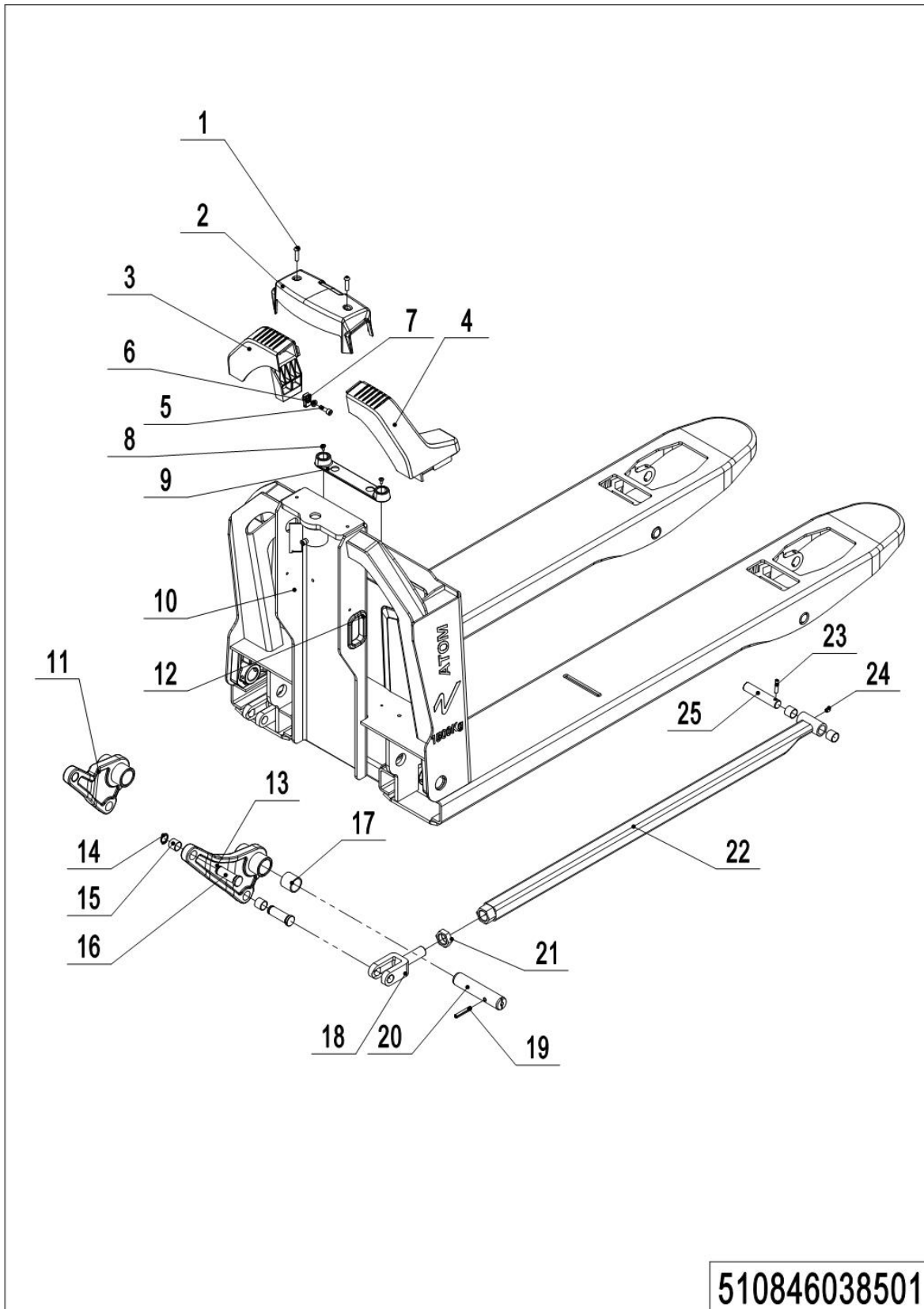
01 Hydraulic Components (15Q2) (510846023501)

No.	Item Code	Mark	Item Description	Qty.	Substitute	Note
1	910200400017	1	Screw	2		
2	510824020100		Cover	1		
3	510824010004		Mounting Rack	1		
4	950900100131	2	Pump Unit	1		
4.01	509998510002	2	Motor	1		
4.02	508098520008	2	Brush	1		
4.03	508098520007	2	Cables	1		
4.04	509998510003	2	Magnetic Valve	1		
4.05	508598520011	2	Switch	1		
4.06	508598510008	2	Gear Pump	1		
4.07	508598510010	2	Tank	1		
4.08	508598510009	2	Cap-Tank	1		
4.09	508598520005	2	Filter	1		
5	510824020101		Cover	1		
6	910200300018	1	Screw	4		
7	910200200176	1	Screw	2		黑色
8	510824020103		Cover	1		
9	910401300017		Circlip	1		
10	509924010000		Cylinder	1		
10.1	508098510018		Seal Kit	1		
10.2	910701100019		Steel Ball	1		
10.3	508598510004		Seal Kit	1		
11	910200200036	1	Screw	4		
12	910400500005	1	Spring Washer	7		
13	910200200075	1	Screw	4		

1= Supply as package. 2= Supply with constraints. 3= Phasing-out supply. 4= Supply as assembly. 5= Check other tables.

Chapter 3: Truck Frame

01 Truck Frame (510846038501)

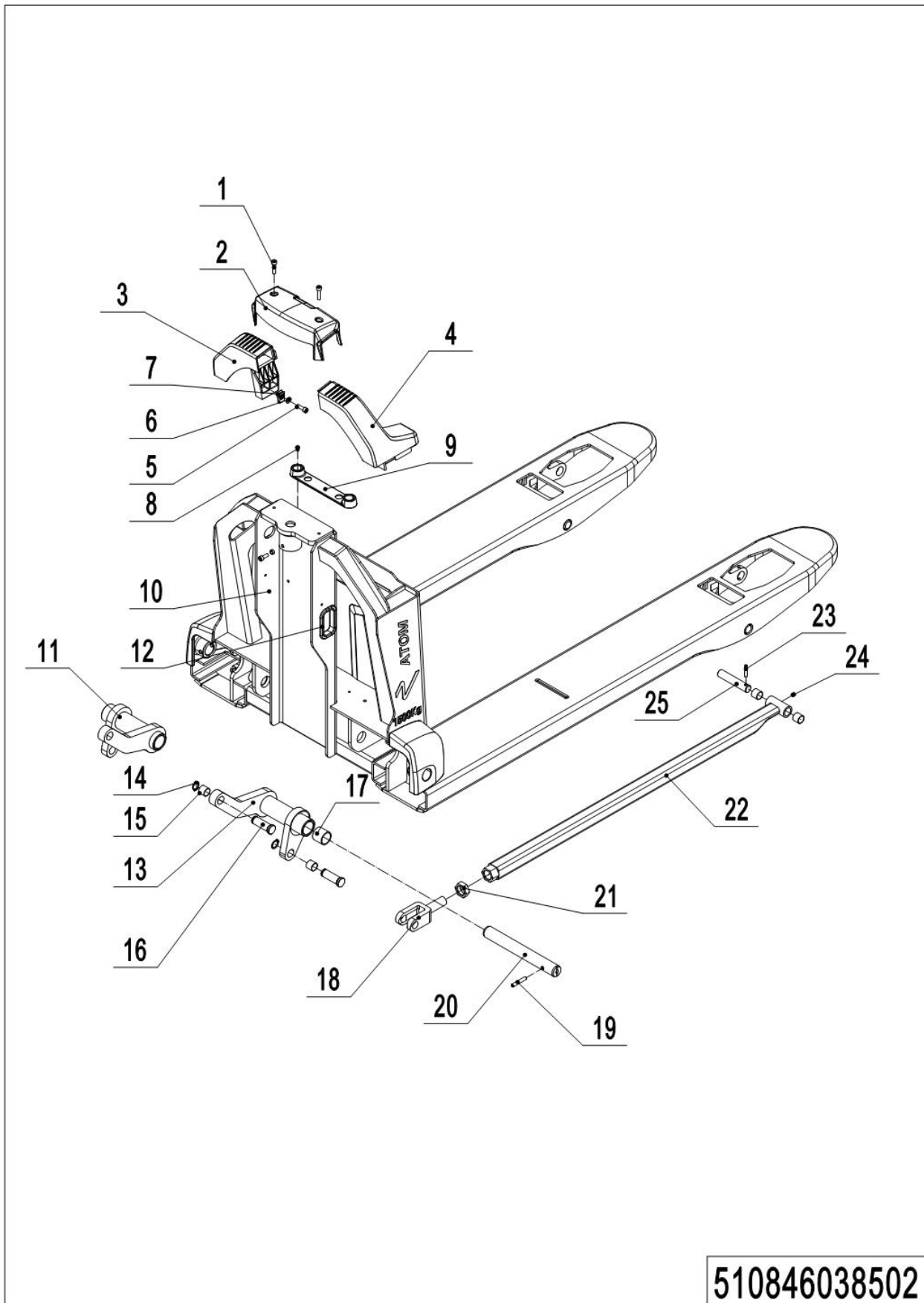


1= Supply as package. 2= Supply with constraints. 3= Phasing-out supply. 4= Supply as assembly. 5= Check other tables.

01 Truck Frame (510846038501)

No.	Item Code	Mark	Item Description	Qty.	Substitute	Note
1	910200200140		Screw	2		
2	510838520100		Cover	1		
2	510838520105		Cover	1		
3	510838520101		Side Plate	1		
4	510838520102		Side Plate	1		
5	910200200035		Screw	2		
6	910400100005		Flat Washer	2		
7	940400400001		Cage Nut	2		
8	910200500034		Screw	2		
9	509938520009		Battery Rack	1		
10	510838510000		Chassis (540x1150)	1		
10	510838510006		Chassis (75mm, 540x1150)	1		
11	510838510003		Rise Arm	1		
12	509938520041		Jacket	1		
13	510838510002		Rise Arm	1		
14	910401300007		Circlip	4		
15	940500100083		Bushing	8		
16	502338520026		Pin	4		
17	940500100097		Bushing	4		
18	502338520027		Push Rod Fork	2		
19	910600400041		Spring Pin	2		
20	510838520103		Axle	2		
21	910300400008		Nut	2		
22	509938510002		Push Rod (1150)	2		
23	910600500002		Spring Pin	4		
24	911200100001		Oil Cup	1		
25	502338520030		Axle	2		

02 Truck Frame (510846038502)



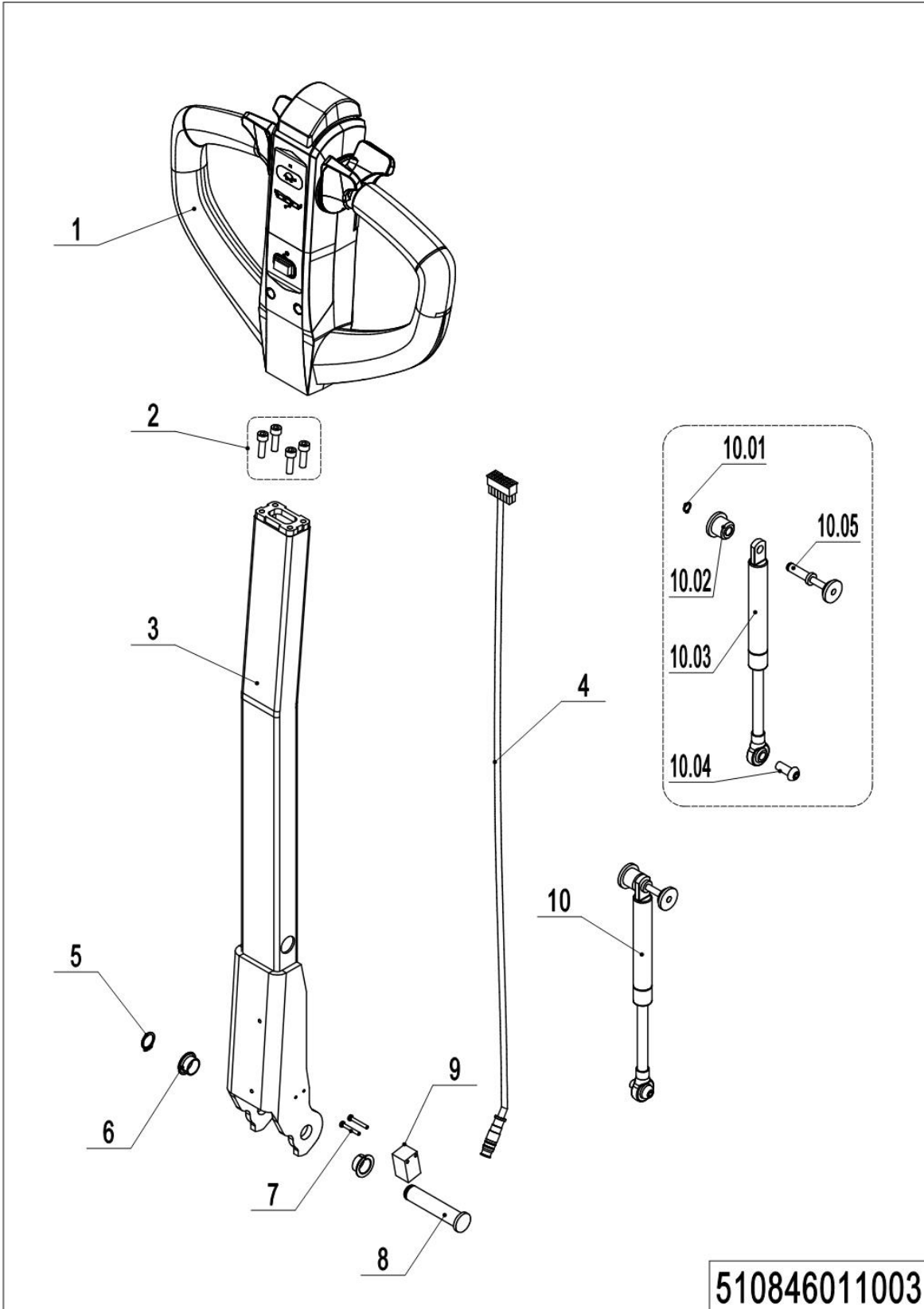
510846038502

02 Truck Frame (510846038502)

No.	Item Code	Mark	Item Description	Qty.	Substitute	Note
1	910200200140	1	Screw	2		
2	510838520100		Cover	1		
2	510838520105		Cover	1		
3	510838520101		Side Plate	1		
4	510838520102		Side Plate	1		
5	910200200035		Screw	2		
6	910400100005		Flat Washer	2		
7	940400400001		Cage Nut	2		
8	910200500034		Screw	2		
9	509938520009		Battery Rack	1		
10	510838510001		Chassis (685x1150)	1		
10	510838510007		Chassis (75mm, 685x1150)	1		
11	510838510005		Rise Arm	1		
12	509938520041		Jacket	1		
13	510838510004		Rise Arm	1		
14	910401300007		Circlip	4		
15	940500100083		Bushing	8		
16	502338520026		Pin	4		
17	940500100097		Bushing	4		
18	502338520027		Push Rod Fork	2		
19	910600400041		Spring Pin	2		
20	510838520104		Axle	2		
21	910300400008		Nut	2		
22	509938510002		Push Rod (1150)	2		
23	910600500002		Spring Pin	4		
24	911200100001		Oil Cup	1		
25	502338520030		Axle	2		

Chapter 4: Steering System, Braking System, Wheels

01 Tiller Unit (510846011003)

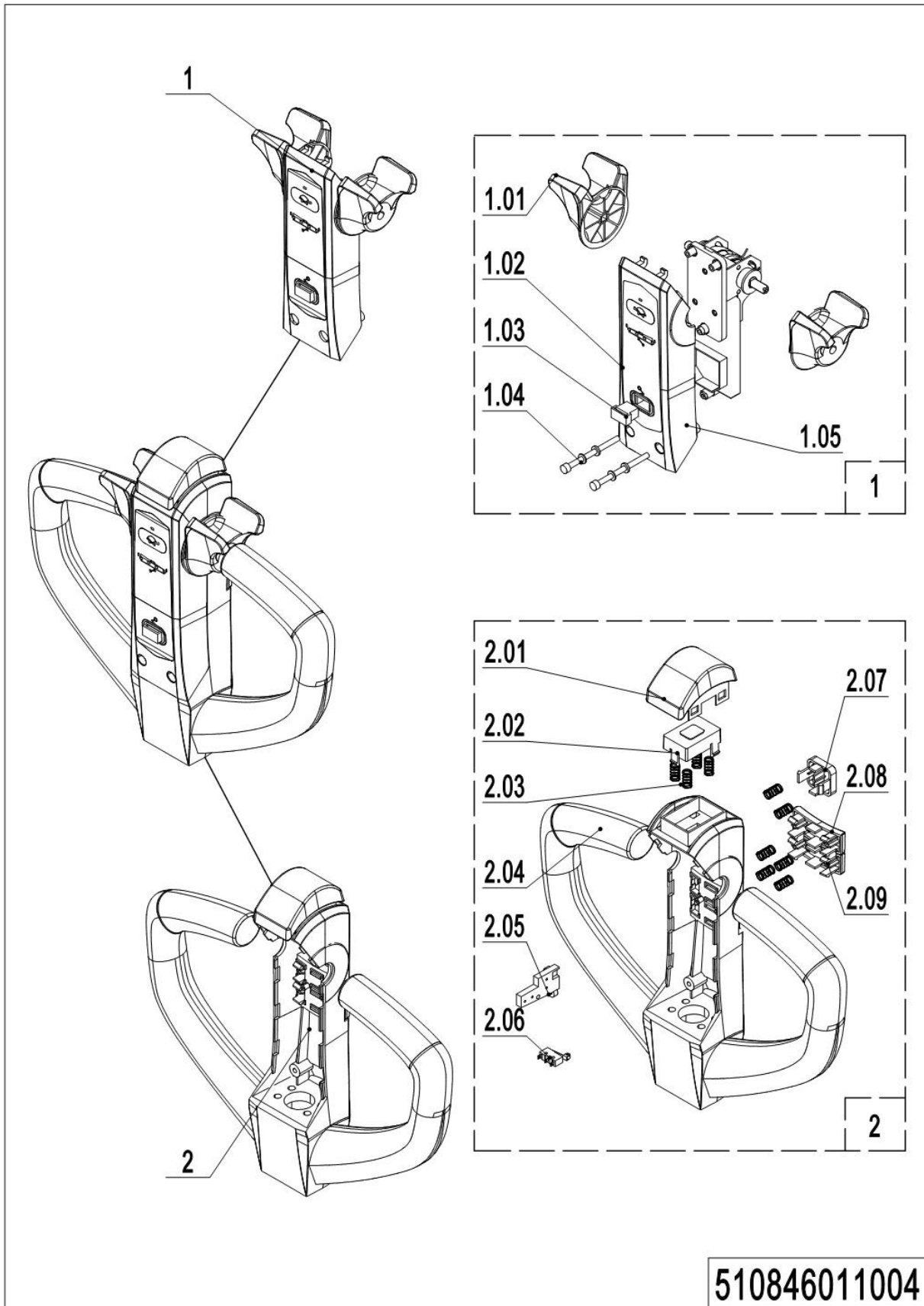


1= Supply as package. 2= Supply with constraints. 3= Phasing-out supply. 4= Supply as assembly. 5= Check other tables.

01 Tiller Unit (510846011003)

No.	Item Code	Mark	Item Description	Qty.	Substitute	Note
1	922100100124	2	Control Handle	1		
2	910200200036	1	Screw	4		
3	509911010002		Tiller	1		
4	509933010007		Wire Harness	1		
5	910401300006		Circlip	1		
6	940500200001		Bushing	2		
7	941101100001	1	Screw	2		
8	508011020004		Pin	1		
9	920200400027		Proximity Switch	1		
10	508098510084		Gas Spring Kit	1		
10.1	910401300001		Circlip	1		
10.2	508011020005		Fixing Base	1		
10.3	508011010001		Gas Spring	1		
10.4	941100100011	1	Screw	1		
10.5	508011010002		Pin	1		

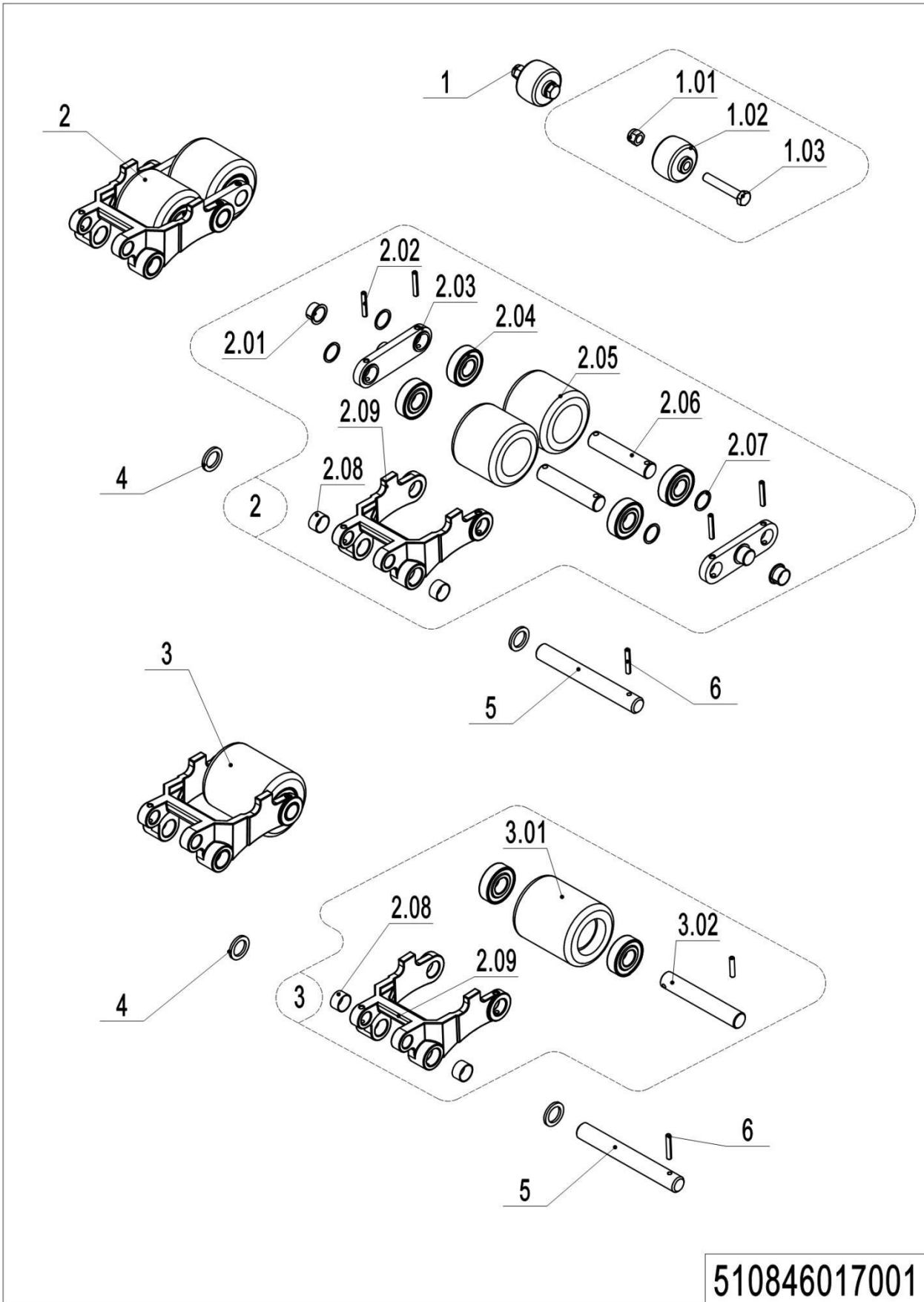
02 Tiller (510846011004)



02 Tiller (510846011004)

No.	Item Code	Mar	Item Description	Qty.	Substitute	Note
1	509998510017	2	Handle Cap	1		
1.01	509998520022		Dial Key	1		
1.02	509998520023		Indicator Light	1		
1.03	509998520024		Magnetic snap	1		
1.04	910200200030	1	Screw	2		M5*50
1.05	509998520025	2	Cover	1		
2	509998510016		Handle Cap	1		
2.01	509998520027		Button Cap	1		
2.02	509998520028		Cover	1		
2.03	509998520029		Spring	1		Ø 0.6* Ø 8.7*16
2.04	509998520030	2	Control Handle body	1		
2.05	509998520031		Wire Harness	1		
2.06	509998520032		Wire Harness	1		
2.07	509998520033		Button Cap	1		
2.08	509998520034		Button Cap	1		
2.09	509998520035		Button Cap	1		

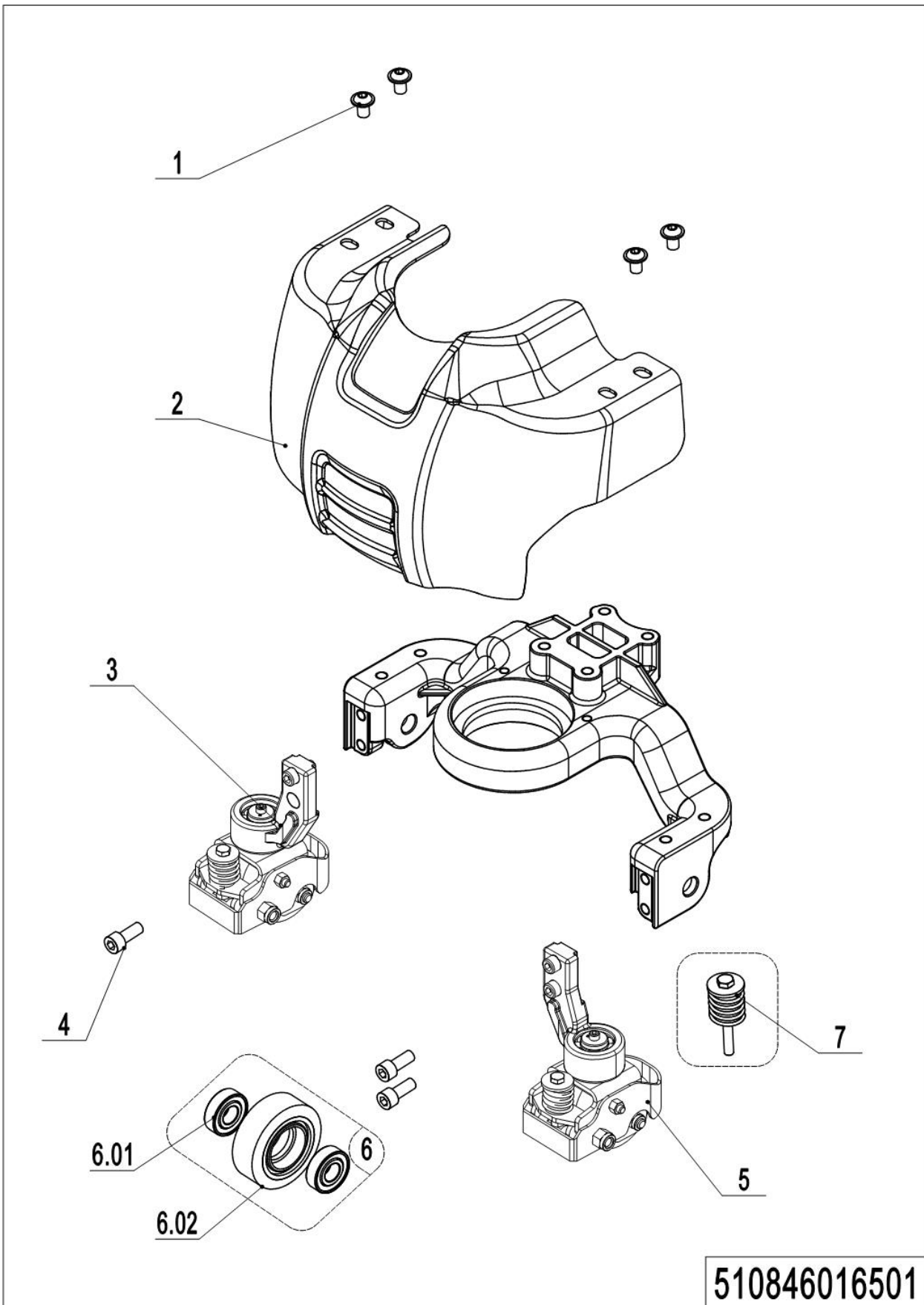
03 Load Wheel (Tandem) (510846017001)



1= Supply as package. 2= Supply with constraints. 3= Phasing-out supply. 4= Supply as assembly. 5= Check other tables.

03 Load Wheel (Tandem) (510846017001)

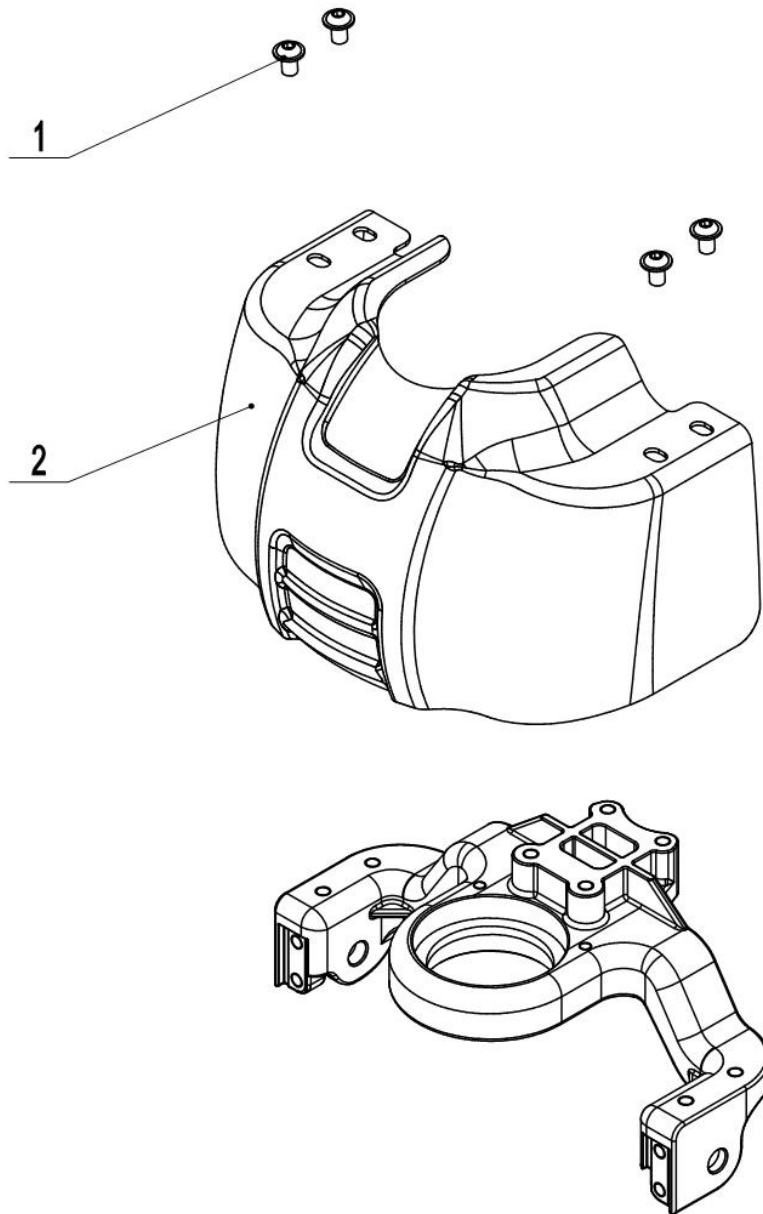
No.	Item Code	Mark	Item Description	Qty.	Substitute	Note
1	502398510003		Pulley components	2		
1.01	910300500005	1	Nut	2		
1.02	505638520039		Running Pulley	2		
1.03	941100200019	1	Bolt	2		
2	509998510004		Wheel	2		
2.01	940500200038		Bushing	4		
2.02	910600400027	1	Spring Pin	8		
2.03	508017020001		Plate	4		
2.04	910700200019		Bearing	8/4		双/单
2.05	940300300047		Wheel Φ 80x70	4		
2.06	502317020001		Axle	4		
2.07	940600500013		Washer	8/4		双/单
2.08	940500100088		Bushing	4		
2.09	502338520078		Riser	2		
3	509998510005	2	Wheel	2		
3	510898510001		Wheel Kits	2		
3.01	940300300023		Wheel Φ 80x93	2		
3.01	940300300002		Wheel Φ 74x93	2		
3.02	301017020001		Axle	2		
4	502338520033		Roller	4		
5	502338520031		Axle	2		
6	910600400025		Spring Pin	2		

04 Caster (510846016501)

1= Supply as package. 2= Supply with constraints. 3= Phasing-out supply. 4= Supply as assembly. 5= Check other tables.

04 Caster (510846016501)

No.	Item Code	Mark	Item Description	Qty.	Substitute	Note
1	941100100005	1	Screw	4		
2	509916520001		Apron	1		
3	508016510002		Caster Assembly	1		
4	910200200076	1	Screw	4		
5	508016510005		Caster Assembly	1		
6	502398510015	2	Load Wheel Kit	2		
6.01	910700200018		Bearing	4		
6.02	940300300017		Wheel Φ 80x30	2		
7	508098510047		Spring Components	2		

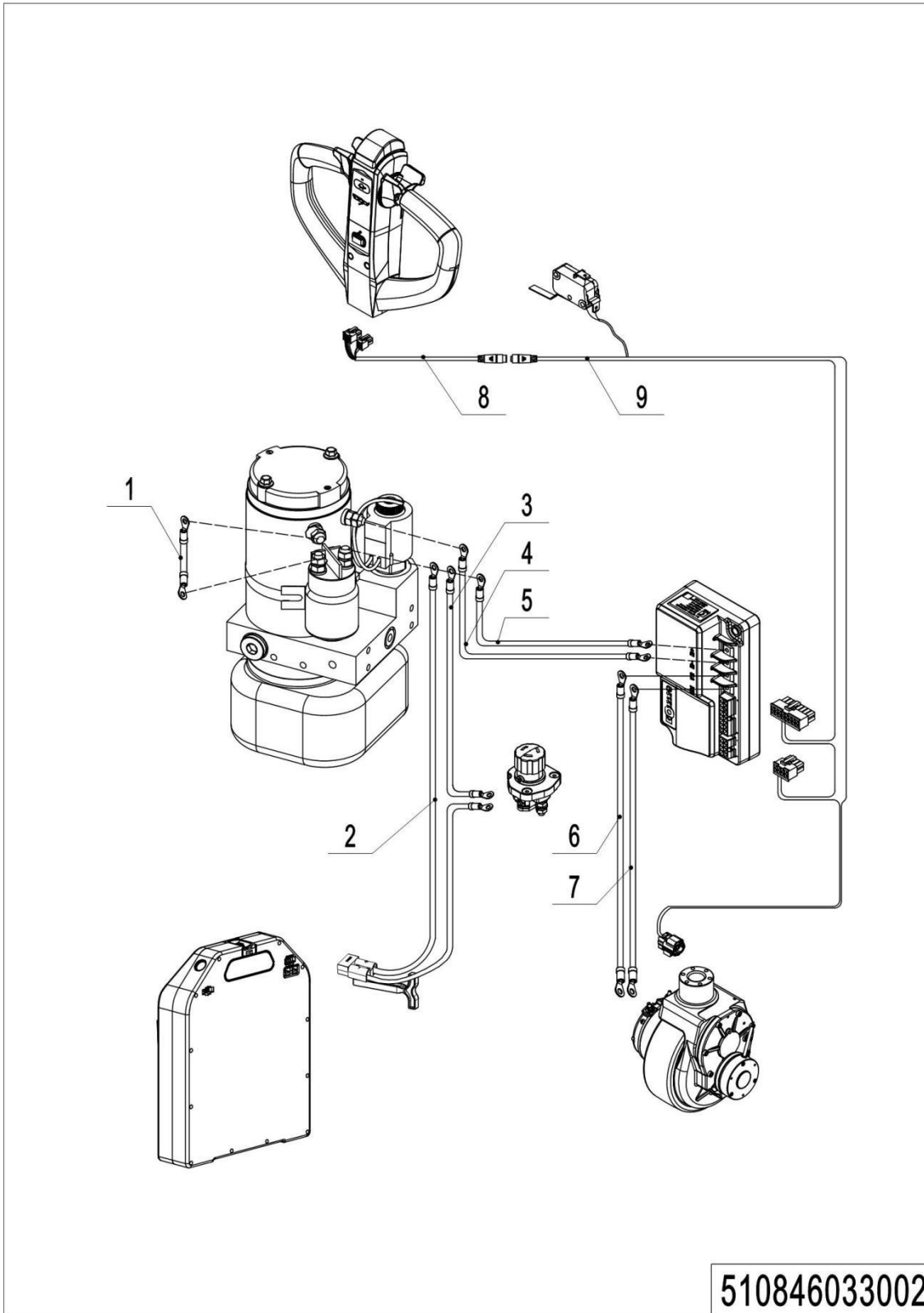
05 Caster (510846016502)**510846016502**

05 Caster (510846016502)

No.	Item Code	Mark	Item Description	Qty.	Substitute	Note
1	941100100005	1	Screw	4		
2	509916520000		Apron	1		

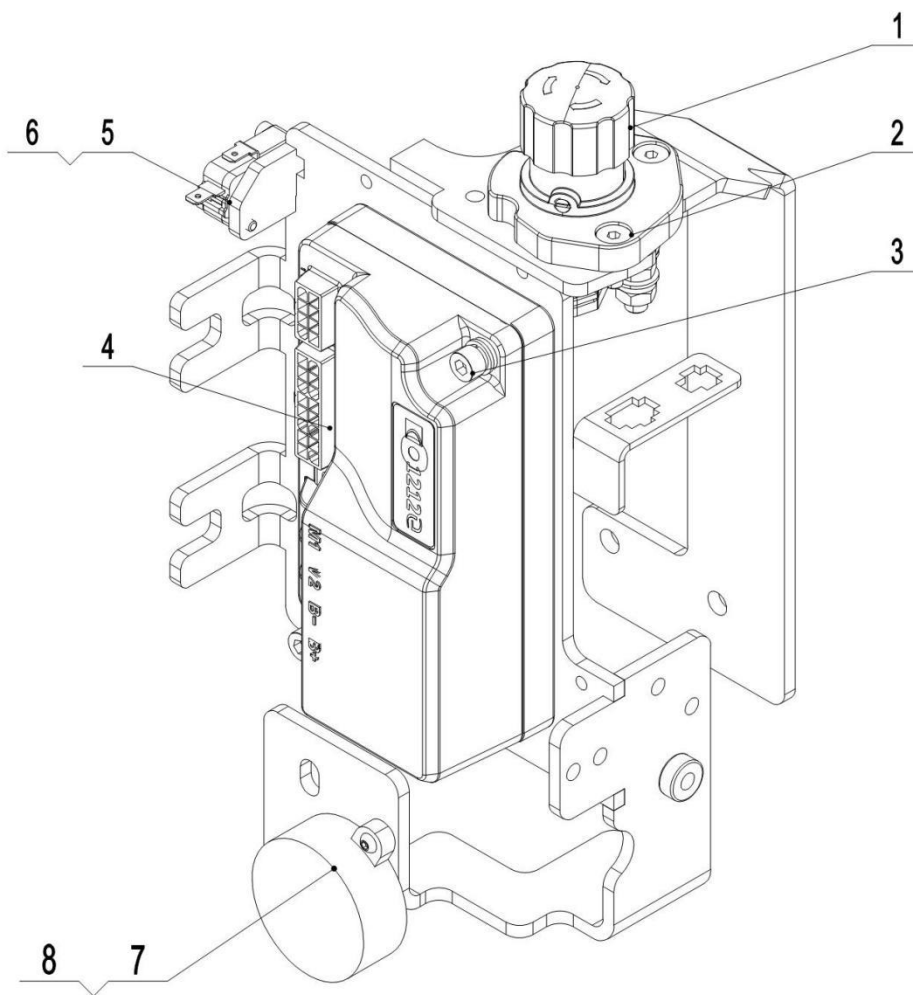
Chapter 5: Electrical Parts

01 Wire Harness (510846033002)



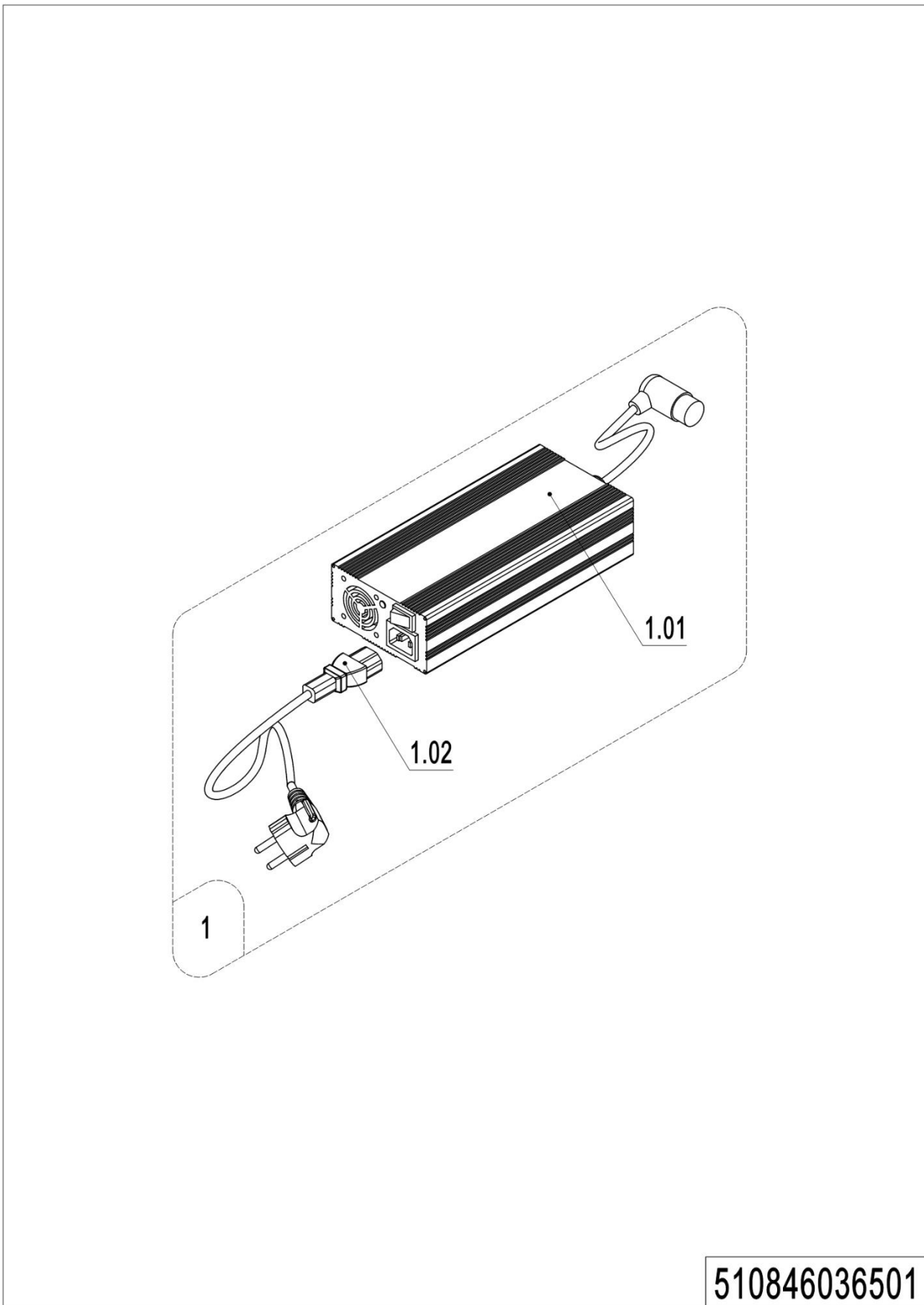
01 Wire Harness (510846033002)

No.	Item Code	Mark	Item Description	Qty.	Substitute	Note
1	509933010012		Cables	1		
2	510833010003		Wire Harness	1		
3	508033010033		Wire Harness	1		
4	509933010014		Cables	1		
5	508033010035		Wire Harness	1		
6	509933010053		Cables	1		
7	509933010052		Cables	1		
8	509933010044		Wire Harness	1		
9	510833010000		Wire Harness	1		

02 Electronic components (509946033012)**509946033012**

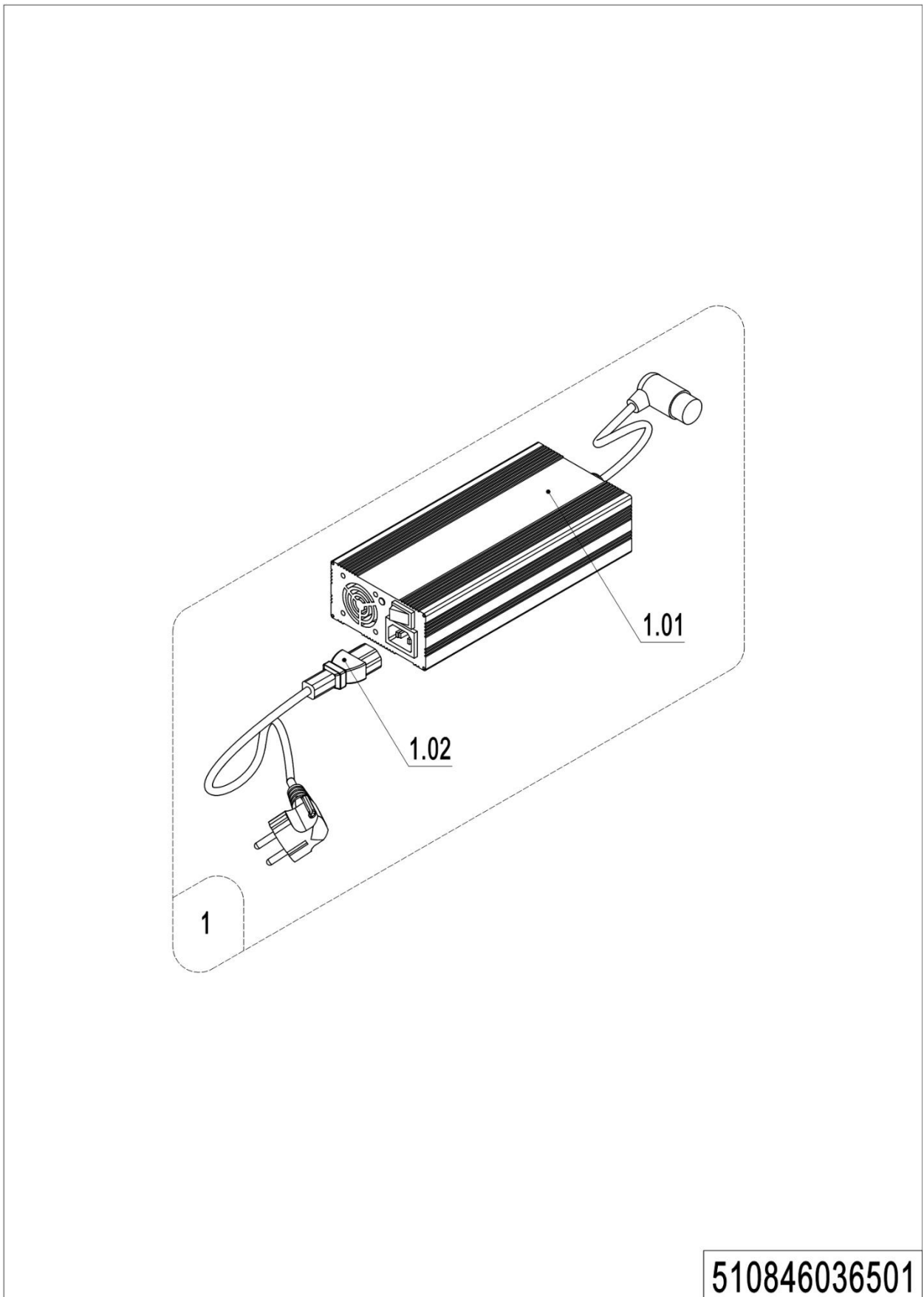
02 Controller (509946033012)

No.	Item Code	Mark	Item Description	Qty.	Substitute	Note
1	920200100027		Emergency Button	1		
2	910200400010	1	Screw	2		
3	910200200025	1	Screw	2		
4	921400100174		Controller	1		
5	910200200004	1	Screw	2		
6	920200300012		Microswitch	1		
7	509998520062		buzzer	1		
8	910200300002	1	Screw	2		

03 Charger (510846036501)**510846036501**

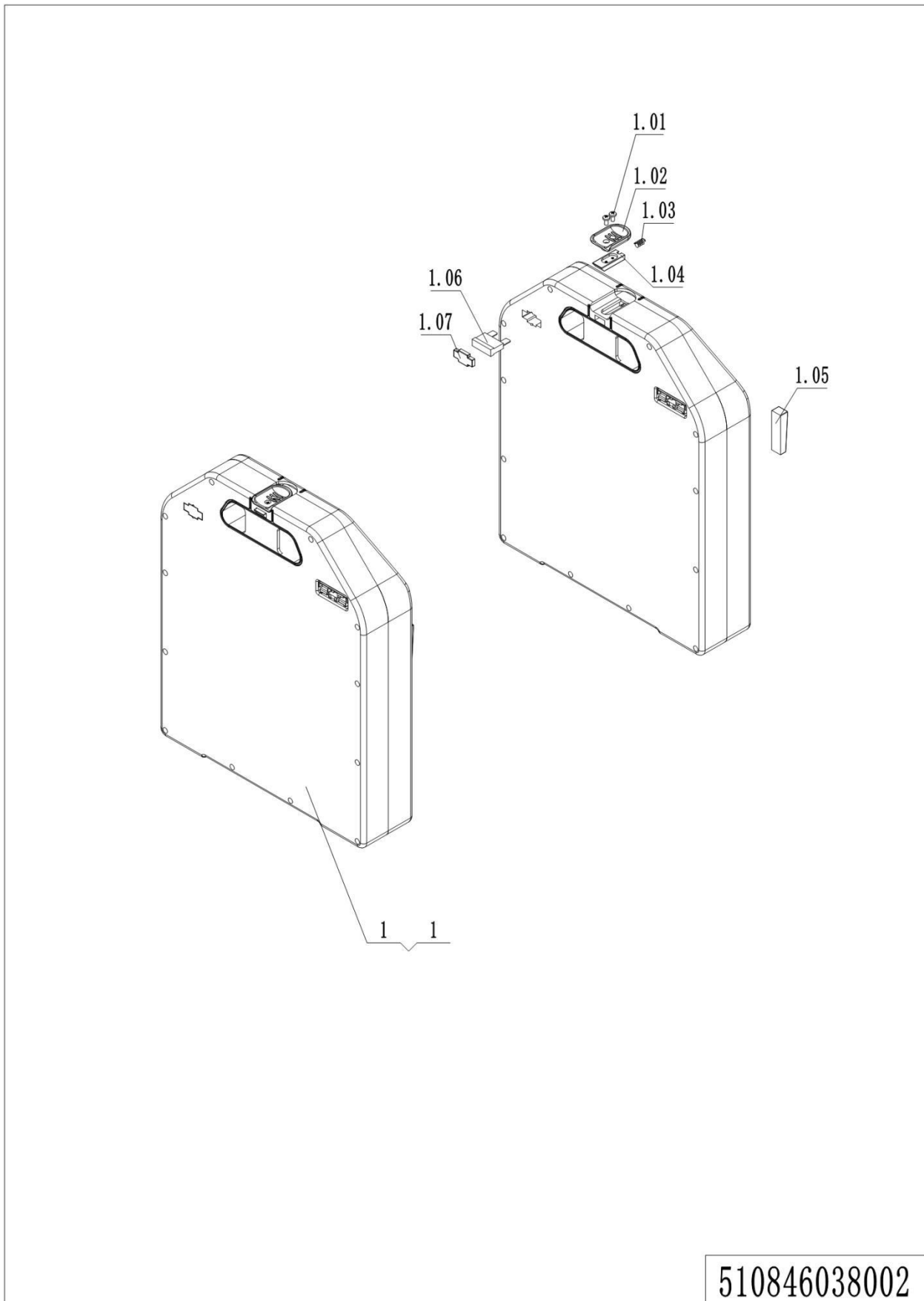
03 Charger (510846036501)

No.	Item Code	Mark	Item Description	Qty.	Substitute	Note
1	508036510062		charger24V12A (ARG)	1		TL
1	508036510066		Charger24V12A (DK)	1		TL
1	921000200625		Charger24V12A	1		TL
1	508036510063		charger24V12A (ZA)	1		TL
1	508036510061		charger24V12A (BRA)	1		TL
1	508036510060		charger24V12A (ISR)	1		TL
1	508036510059		charger24V12A (CH)	1		TL
1	508036510058		charger24V12A (ITA)	1		TL
1	508036510057		charger24V12A (AUS)	1		TL
1	508036510056		charger24V12A (EU)	1		TL
1	508036510055		charger24V12A (US)	1		TL
1	508036510054		charger24V12A (ENG)	1		TL
1	508036510053		Charger24V12A (Asia)	1		TL
1	921000200577		charger24V12A (JPN)	1		QQE
1	921000200464		Charger 24V8A (Aisa-ENG)	1		SS
1	921000200604		Charger24V8A (JPN)	1		SS
1	508036510067		Charger24V8A (KR)	1		SS
1	508036510071		Charger24V8A (AUS)	1		TL
1	508036510072		Charger24V8A (ITA)	1		TL
1	508036510073		Charger24V8A (CH)	1		TL
1	508036510074		Charger24V8A (ISR)	1		TL
1	508036510075		Charger24V8A (BRA)	1		TL
1	508036510076		Charger24V8A (ARG)	1		TL
1	508036510077		Charger24V8A (ENG)	1		TL
1	508036510079		Charger24V8A (EU)	1		TL
1	508036510080		Charger24V8A (ZA, S)	1		TL
1	508036510081		Charger24V8A (EU)	1		TL
1	508036510082		Charger24V8A (ZA)	1		TL
1	508036510078		Charger24V12A (ZA, S)	1		TL
1	508036510070		Charger24V8A (EU)	1		TL
1.01	921000200590		Charger24V12A	1		TL

03 Charger (508046036501)

03 Charger (510846036501)

No.	Item Code	Mark	Item Description	Qty.	Substitute	Note
1.01	921000200621		ChargerSS24V8A	1		SS
1.01	921000200648		Charger24V8A(EU)	1		TL
1.02	921500200021		Power Cord (Asia)	1		
1.02	921500200070		Wiring Harness (DK)	1		
1.02	921500200063		Power Cord (ZA)	1		
1.02	921500200064		Wiring Harness (ZA, S)	1		
1.02	921500200050		Power Cord (ARG)	1		
1.02	921500200024		Power Cord (AUS)	1		
1.02	921500200049		Power Cord (BRA)	1		
1.02	921500200023		Power Cord (USA)	1		
1.02	921500200022		Power Cord (EU)	1		
1.02	921500200026		Power Cord (CH)	1		
1.02	921500200028		Power Cord (ISR)	1		
1.02	921500200025		Power Cord (ITA)	1		
1.02	921500200027		Power Cord (ENG)	1		

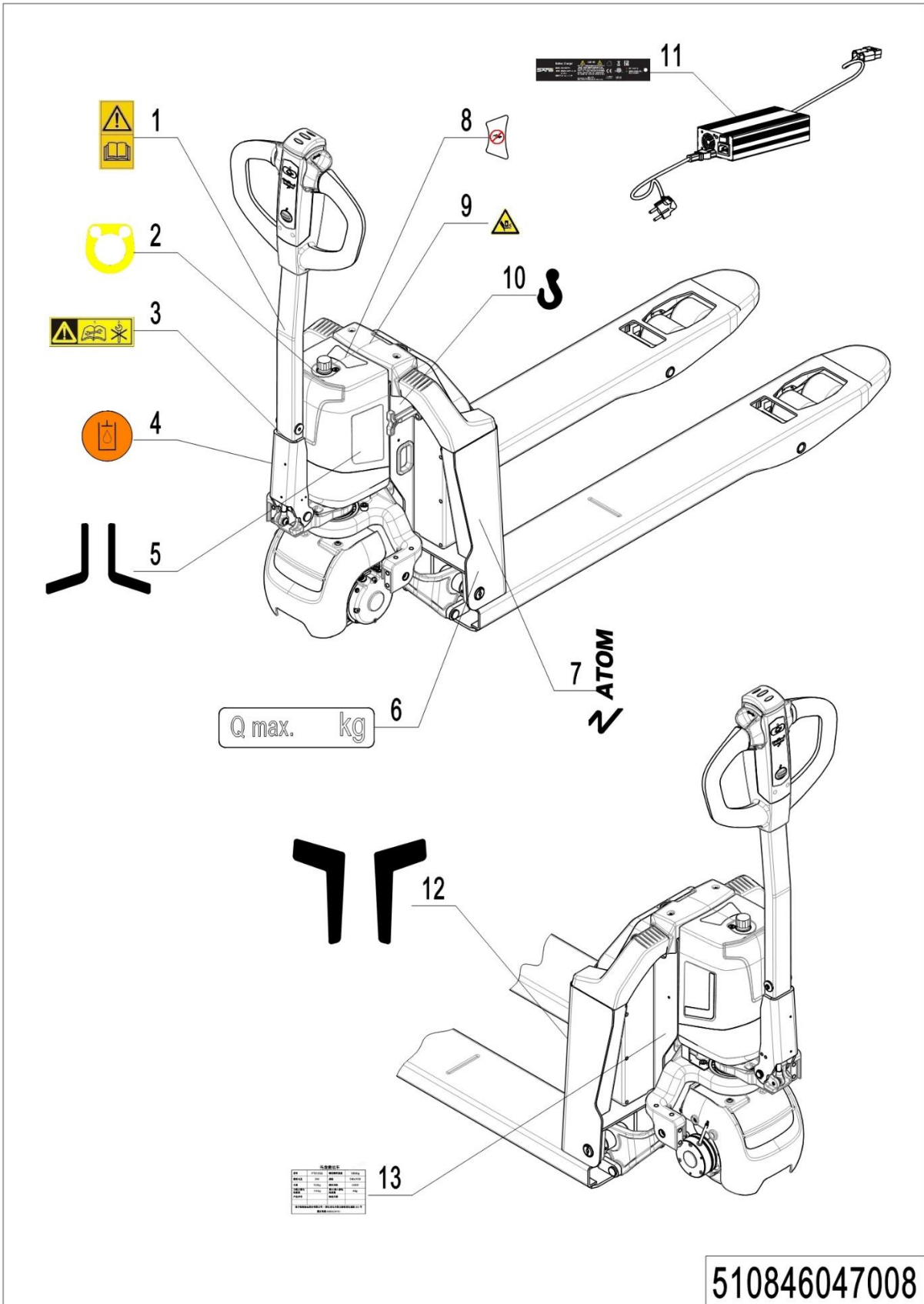
04 Traction Battery (510846038002)

04 Traction Battery (510846037002)

No.	Item Code	Mark	Item Description	Qty.	Substitute	Note
1	509937010021		Li Battery24V20Ah	1		EN1175
1	509937010022		Li Battery24V40Ah	1		EN1175
1.01	910200500011	1	Screw	2		
1.02	508098520022	2	Plastic Handle	1		
1.03	508098520024	2	Spring	1		
1.04	508098520023	2	Fixing Mount	1		
1.05	509998520000		Stop Block	2		
1.06	920100200006		Fuse	1		
1.07	508098520021	2	waterproof plug	1		

Chapter 6: Others

01 Labels and Decals-EU (510846047008)



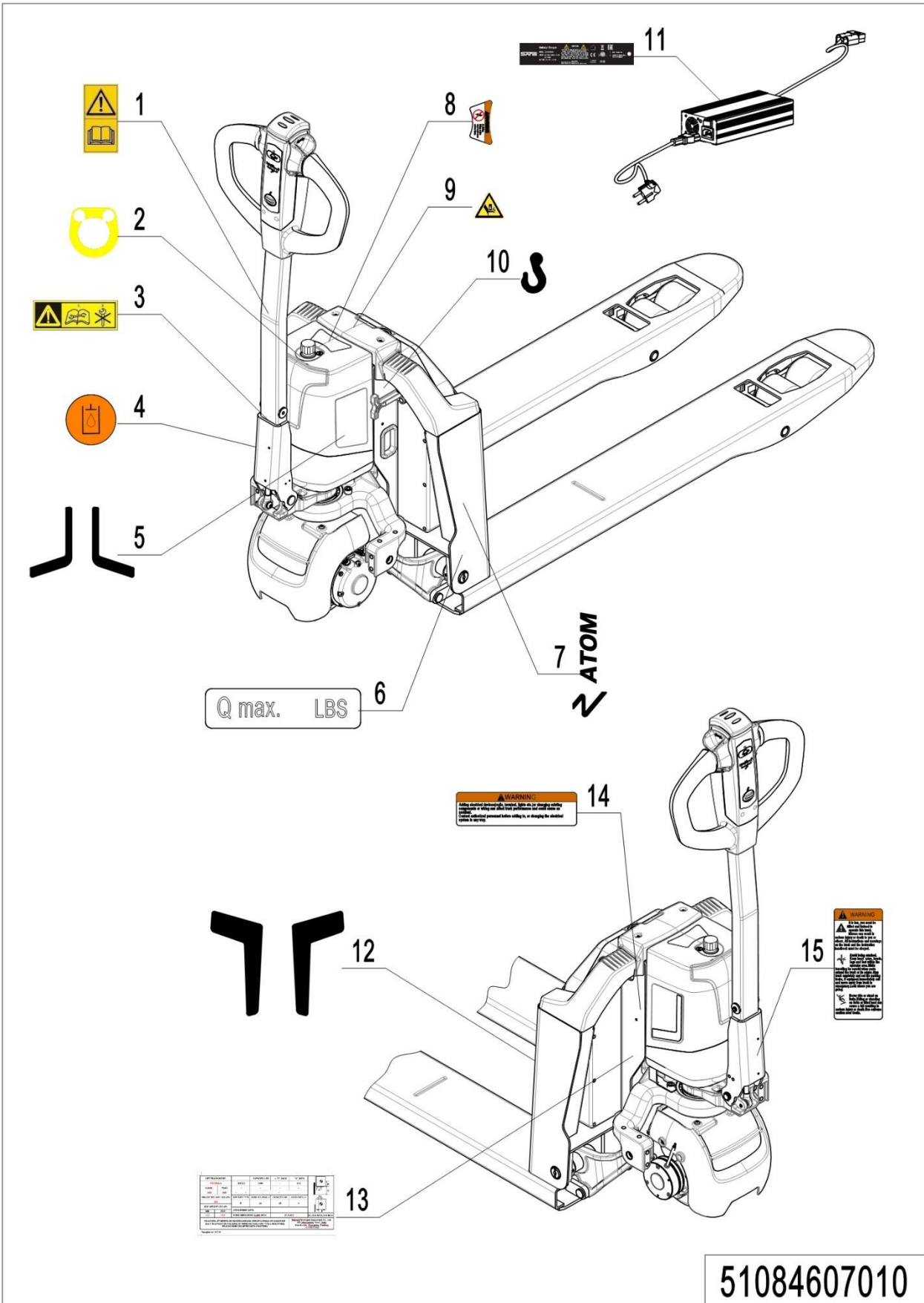
510846047008

1= Supply as package. 2= Supply with constraints. 3= Phasing-out supply. 4= Supply as assembly. 5= Check other tables.

01 Labels and Decals-EU (510846047008)

No.	Item Code	Mark	Item Description	Qty.	Substitute	Note
1	941200300002		Label	1		
2	510847020006		Label	1		
3	508047020004		Label	2		
4	941200300003		Label	1		
5	510847020001		Label	1		
6	941200200009		Label	2		
7	510847020004		Label (ATOM+N)	2		
8	510847020005		Label	1		
9	508047020007		Label	1		
10	941200300001		Label	2		
11	509947020005		Label	1		
12	510847020000		Label	1		
13	510847520001		Identification Plate	1		

02 Labels and Decals-US (510846047010)



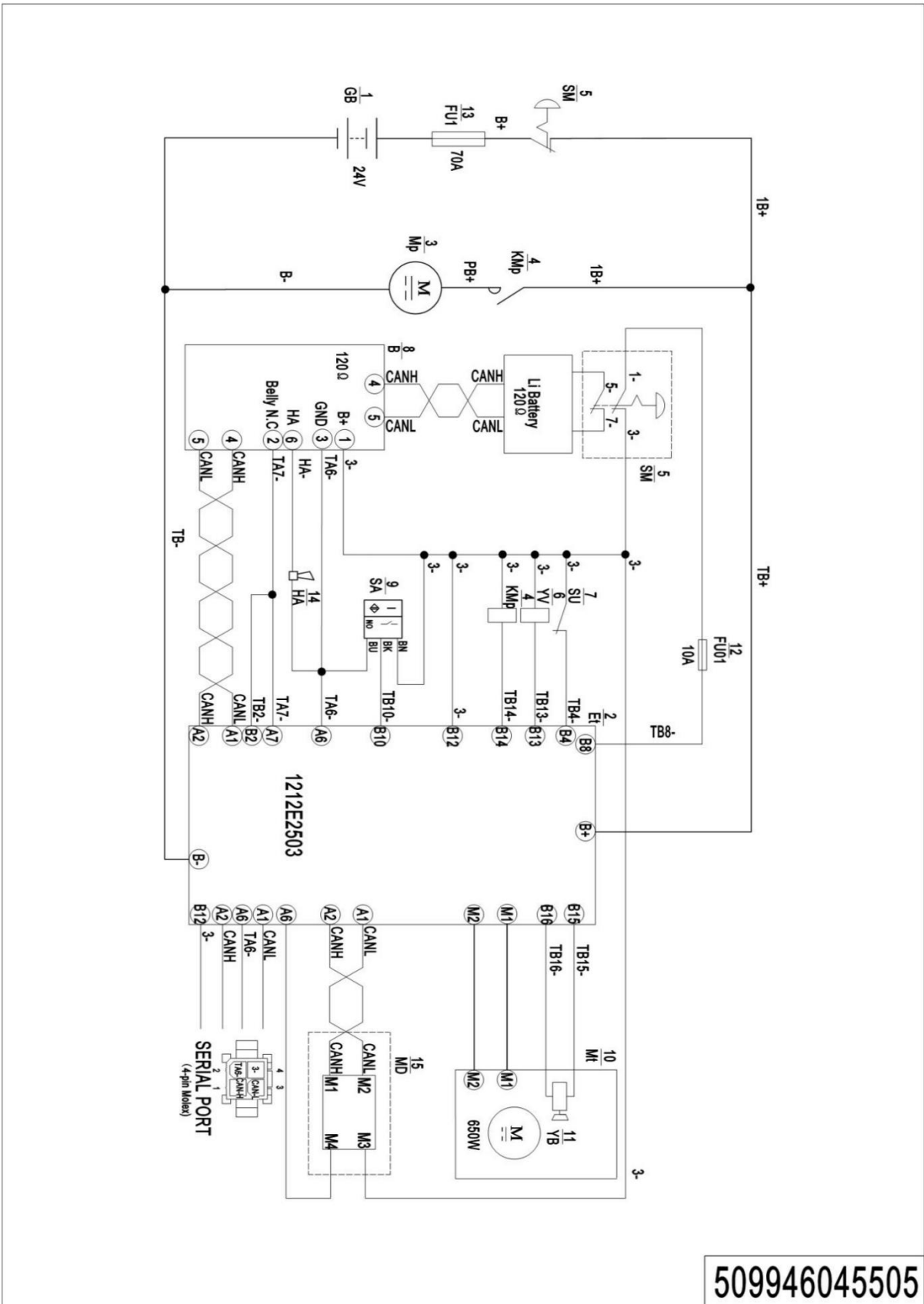
1= Supply as package. 2= Supply with constraints. 3= Phasing-out supply. 4= Supply as assembly. 5= Check other tables.

02 Labels and Decals-US (510846047010)

No.	Item Code	Mark	Item Description	Qty.	Substitute	Note
1	941200300002		Label	1		
2	510847020006		Label	1		
3	508047020004		Label	1		
4	941200300003		Label	1		
5	510847020001		Label	1		
6	941200200009		Label	1		
7	510847020004		Label (ATOM+N)	2		
8	510847020007		Label (US)	1		
9	508047020007		Label	1		
10	941200300001		Label	2		
11	509947020005		Label	1		
12	510847020000		Label			
13	510847520002		Identification Plate (US)			
14	941200100010		Label			
15	941200100009		Label			

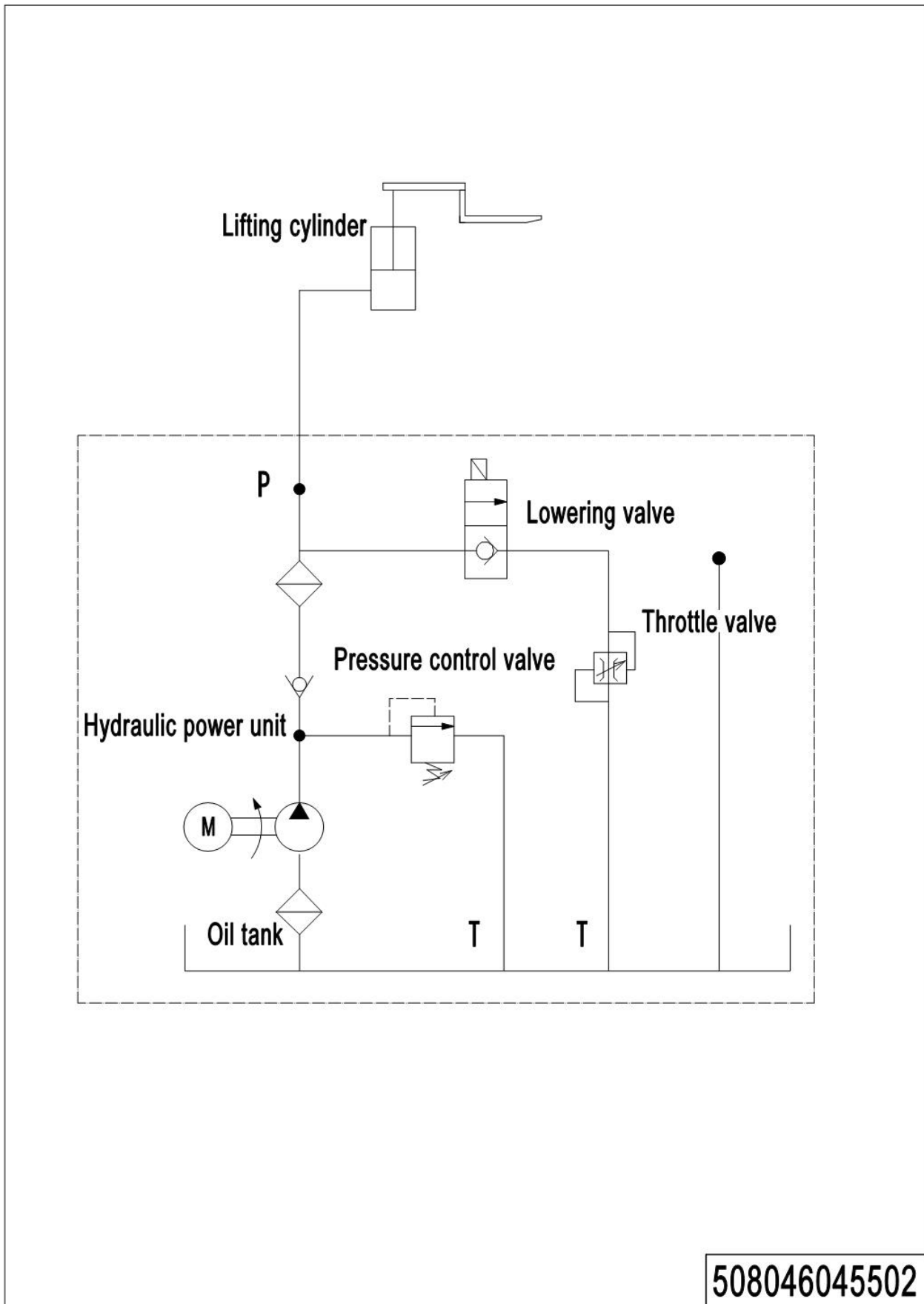
Appendix

01 Electrical Circuit Diagram (509946045504)



1= Supply as package. 2= Supply with constraints. 3= Phasing-out supply. 4= Supply as assembly. 5= Check other tables.

02 Hydraulic Circuit Diagram (508046045502)



03 Consumable Parts List

No.	Item Code	Item Description	Qty.	Chapter/ Section/ Number
1	910700200058	Bearing	1	Chapter 1/01/5
2	910700600044	Bearing	1	Chapter 1/01/7
3	508098510018	Seal Kit	1	Chapter 2/01/11. 01
4	508598510004	Seal Kit	1	Chapter 2/01/11. 03
5	940500100097	Bushing	2	Chapter 3/01/11. 01Chapter 2/02/15. 01
6	940500100083	Bushing	8	Chapter 3/01/11. 05Chapter 2/02/15. 04
7	940500200001	Bushing	2	Chapter 4/01/06 Chapter 4/03/06 Chapter 4/05/06
8	508011010001	Gas Spring	1	Chapter 4/01/10. 3Chapter 4/03/10. 3
8	508011010001	Gas Spring	1	Chapter 4/05/10. 3
9	940500200038	Bushing	4	Chapter 4/07/2. 01
10	910700200019	Bearing	8/4	Chapter 4/07/2. 04
11	940300300047	Wheel Φ 80x70	4	Chapter 4/07/2. 05
12	940500100088	Bushing	4	Chapter 4/07/2. 09
13	940300300023	Wheel Φ 80x93	2	Chapter 4/07/3. 01
14	910700200018	Bearing	4	Chapter 4/08/6. 01Chapter 4/10/4. 01
15	940300300017	Wheel Φ 80x30	2	Chapter 4/08/6. 02Chapter 4/10/4. 02
16	920100200006	Fuse	1	Chapter 5/04/1. 05